

INDOFINE Chemical Company, Inc.

121 Stryker Lane, Bldg. 30, Suite 1 • Hillsborough, NJ 08844 • U.S.A.

Phone: (908) 359-6778 • FAX: (908) 359-1179

website: www.indofinechemical.com

e-mail: chemical@indofinechemical.com

CERTIFICATE OF ANALYSIS

Cat No.: **025162S**

Product: **(+)-CEDROL**
(Cedar camphor; Cypress camphor)

CAS Number: [77-53-2]

Lot Number: 1107145

Chemical Formula: $C_{15}H_{26}O$

Molecular Weight: 222.38

Melting Point: 80.4-83°C

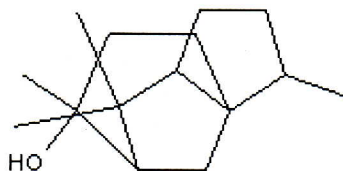
Appearance: White crystalline powder

TLC: Hexane:Ethyl acetate (8:2)

Solubility: Soluble in Chloroform

Storage: 2-8°C

Assay(GC): 99.55%



025162S



INDOFINE Chemical Company, Inc.

121 Stryker Lane, Bldg. 30, Suite 1 • Hillsborough, NJ 08844 • U.S.A.

Phone: (908) 359-6778 • FAX: (908) 359-1179

website: www.indofinechemical.com

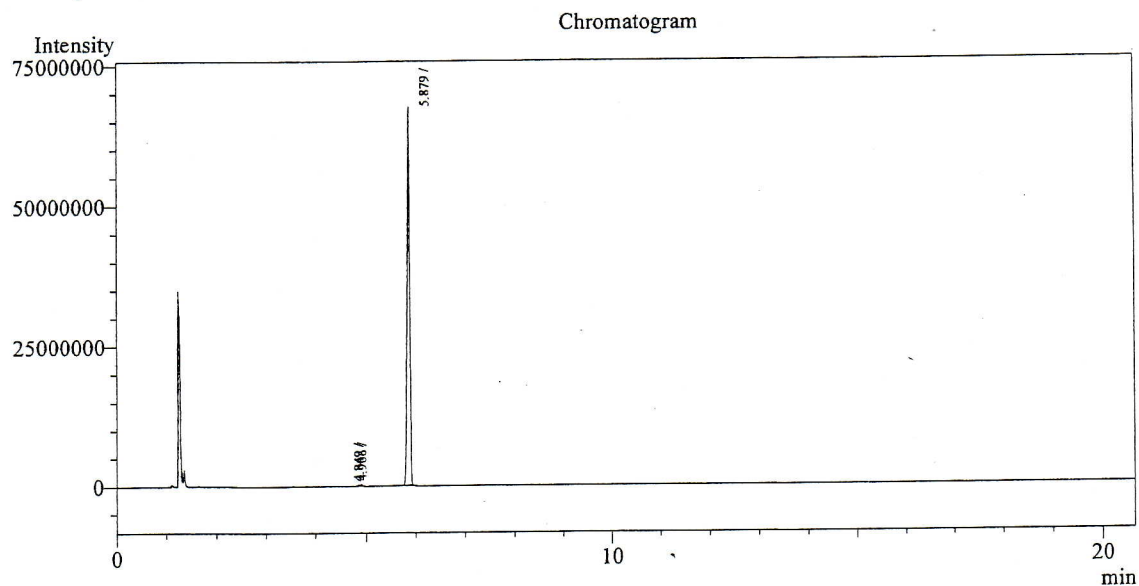
e-mail: chemical@indofinechemical.com

GC ANALYSIS

Analysis Date & Time : 8/18/2011 9:32:49 AM
User Name : Rama krishna
Sample Name : (+)-CEDROL
Sample ID : Lot No.: 1107145
Method Name : D:\Methods\BRC Method.gcm
Data File Name : D:\GC Data\2011\Aug-11\180811A.gcd

Cat. No.: 025162S
Product name: (+)-Cedrol
Lot No.: 1107145

Description
Column : ZB-5
Column Temp : 100-30-300
Inj Temp : 275C
Det temp : 320C



Peak Table - Channel 1

Peak#	Ret. Time	Area	Height	Area%
1	4.849	411872	250374	0.1688
2	4.906	677508	364267	0.2777
3	5.879	242875917	67025074	99.5535
Total		243965297	67639715	100.0000